

# ALFA LAVAL INC.

## COMPOSITE

### STOP LOGS: CHANNEL OR WALL MOUNTING

#### Construction

**Logs:** Constructed from Composite-D suitably reinforced internally with steel members. Logs can be manufactured to any reasonable depth required. Logs are fitted with 4 lifting pins as standard but 2 lifting eyes can be fitted.

**Frame:** (Standard) is a carbon steel fabrication which is sandblasted, flame zinc sprayed, primed and finished with epoxy paint. (Standard color gray). Stainless steel frames (and others including Monel) are available. Any frame mounting can easily be accommodated, i.e. wall sides and invert, recess sides and invert, inside wall (face mounting) or any combination. Large frames are supplied in 3 pieces, ready for site bolting together.

**Seals:** The sealing arrangement for Composite stop logs is a patented feature. It is comprised of side frame sealing faces and a unique inter-log sensitive water activated flap type seal. The frame side seals are multi-finger design and are manufactured from Composite-S backed by resilient Composite-N. These materials are chemically bonded together, then chemically attached to the inside of the frame. The inter-log seal is a Neoprene extrusion that is mechanically attached to the bottom of each log.

All Composite contact faces are made in materials incompatible to each other, thus avoiding the possibility of seizure or sticking, therefore making the operation smooth and easy. All Composite stop logs provide a very good degree of sealing,

under normal operating conditions, with a leakage rate of less than 0.1 gallons per minute per foot of sealing faces. It is not uncommon to achieve 0 leakage.

**Fasteners:** All fasteners used in Composite construction are of stainless steel. All anchor bolts are supplied in 316 stainless steel.

**Lifting Equipment:** Composite offers two choices for lifting or lowering stop logs, a lifting pole with twin hooks or a semi-automatic lifting beam. When conditions are dangerous or logs are not suitable for manual lifting, the lifting beam should be used.

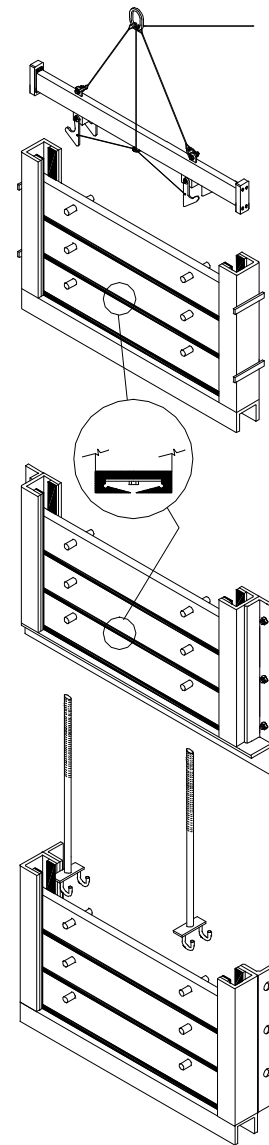
Composite stop logs are available in any size that is required to meet the customers needs.

Specifically designed for mounting on walls or other similar mounting surfaces, Composite stop logs are supplied with a flush invert, i.e., with the lower frame member lying level with the invert. This feature provides for a straight through self-cleansing flow eliminating grit pockets and reducing turbulence.

#### Installation:

**Recesses fixing:** Composite recess mounted stop logs are easily installed into pre-cast recesses in the side walls and invert floor. Lower the frame into these recesses and position in correct location.

**Wall Mounting:** Heavy-duty anchor bolts are supplied with all Composite wall-mounting



stop logs; their cost is included in the price. These anchor bolts offer the following benefits:

- REDUCED CIVIL COSTS
- QUICKER INSTALLATION
- HIGH LOAD CAPACITY

Detailed installation instructions accompany each order.